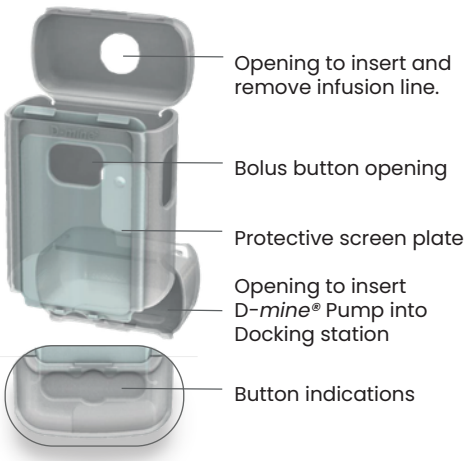


The D-mine® Pump Protective Cover & Case

The D-mine® Pump Protective Cover and Case are designed to **protect the pump from accidental damage or fault to ensure your treatment is not interrupted.**



i The removeable flaps at the top and bottom of the case allow you to change your reservoir and dock the Pump into the docking station to charge without taking off the cover.

i The D-mine® Pump Protective Case allows you to carry the pump conveniently on your belt or around the upper body.

The D-mine® Pump Protective Case

- 1** Unpack the D-mine® Pump Protective Cover.
- 2** Slide the D-mine Pump (without the reservoir or battery) into the protective case.
- 3** Insert the battery into the D-mine Pump. You can do this by removing the bottom flap of the case.
 OPTION 1 OPTION 2
- 4** Insert the D-mine Pump Reservoir by opening the top flap of the case. Ensure the case is not obstructing the reservoir and the reservoir is inserted correctly. The reservoir will click in place when correctly inserted.

- 5** Proceed with the filling process as described in Section 3.1 of the D-mine Pump Instructions for Use.
- 6** During filling, make sure to open the lower flap completely before inserting the Pump into the docking station to allow correct fit.
- 7** Once filling is complete, ensure both the top and bottom flap of the case are returned to the Pump.
- 8** Connect the infusion set and continue with normal steps to begin Dacepton delivery.

Adverse Events

Any adverse events should be reported to your healthcare professional. You can also report adverse events directly via the Yellow Card Scheme at <http://yellowcard.mhra.gov.uk> Adverse events should also be reported to Medical Information on: 0800 254 0174 or drugssafety@everpharma.com

By reporting adverse events you can help provide more information on the safety of this medicine. Very common side effects include hallucinations and injection site reactions. If you experience these side effects, please discuss them with your healthcare professional.

For technical support relating to your device: Telephone: **0800 254 0175** (Monday-Sunday: 07h00-22h00). Outside of these hours, leave a message and you will receive a call back the next day. Email: ever.pharma@nhs.net